



**GRIZZLY**  
DISCOVERIES INC.

**A Canadian Exploration Company**  
Focussed on Cobalt, Copper and  
Precious Metals in BC

**TSX-V:GZD**  
**OTCQB:GZDIF**  
**FWB:G6H**

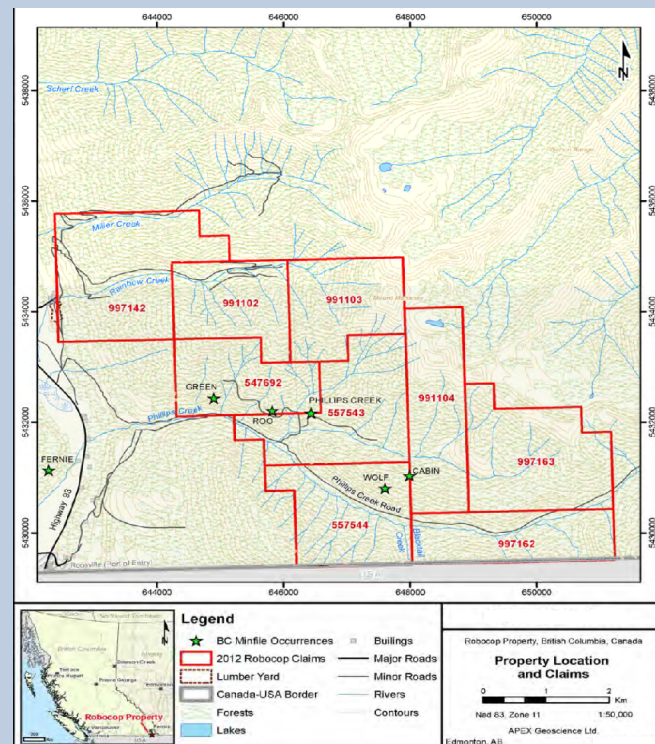
## Robocop Property located in southeastern British Columbia



The target at Robocop is proven mineable reserves of cobalt, copper and gold. With the unstable Democratic Republic of Congo in West Africa supplying over 60% of the world's Cobalt, this creates an opportunity to develop local production that is ethically sourced and supplied.

### ROBOCOP PROPERTY, BC

- 9,891 acres within the Fort Steele Mining District
- Robocop can be worked 270 days/year
- Project has existing logging roads throughout the property
- 5 km from the highway 93/Power lines
- In existing region with over 100 years of mining
- Trench samples 1.63% Cu, 1,010 ppm Co and 1.93% Cu, 579 ppm Co over 6 m
- Previous historical drilling has yielded 1.04% Cu, 0.148% Co over 2.0m (2.9% CuEq)
- Geological modelling using data from 15 historic drill holes and 325 samples returning Cu, Ag, Au, Co
- 2018 Work Program:
  1. 200 line km airborne survey
  2. soil sampling program
  3. 1,000 m diamond drill program



*"New mines are found next to old mines"*

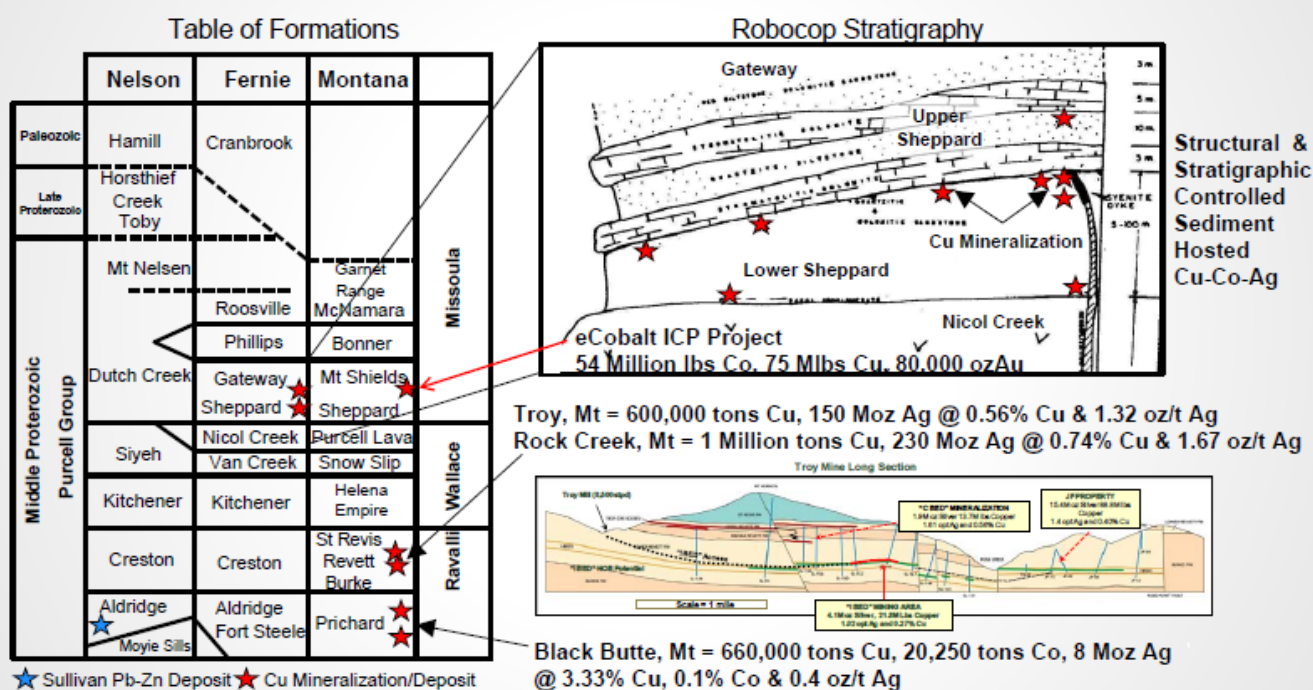
[WWW.GRIZZLYDISCOVERIES.COM](http://WWW.GRIZZLYDISCOVERIES.COM)



## ROBOCOP PROPERTY HIGHLIGHTS

- Under-drilled and under-explored Middle Purcell Group sedimentary rocks
- Large Phillips Creek soil anomaly (1.5 km in length) is un-drilled
- No modern geophysics has been done on the property
- Sediment hosted Co-Cu-Ag mineralization is similar in style, age and host rocks to eCobalt's Idaho Cobalt project and Hecla's Revett Formation hosted mineralization near Troy, Montana
- In Montana, Middle Purcell Group sedimentary rocks host numerous significant stratabound Cu+/-Co-Ag deposits
- The Troy Mine and the Rock Creek Deposit, found within the Middle Proterozoic Revett Formation, contain/produced more than 3.2 billion lbs of Cu and 380 million oz of Ag as disseminated stratabound hydrothermal mineralization

## Geology & Deposits in Purcell Group



Source: M. Dufresne, A. Banas, K. Salter. "Assessment Report for the Robocop Property, South-Eastern British Columbia," APEX Geoscience Ltd. Edmonton, AB, Tech. Rep. March, 2013.

## MANAGEMENT AND DIRECTORS

<b>Brian Testo</b>	President & CEO, Director
<b>Ian Lambert</b>	Chief Operating Officer
<b>Jeremy Strautman</b>	Chief Financial Officer
<b>Michael Dufresne, P.Geol.</b>	Exploration Manager
<b>Dr. Solomon Pillersdorf</b>	Director
<b>Ray Wytinck</b>	Director
<b>Gregory Aharonian</b>	Advisor
<b>Paul Morrow</b>	Advisor

## CORPORATE STRUCTURE

Shares Outstanding:	61.9
Fully Diluted:	74.4
Market Capitalization:	@ \$0.105 \$6.5M

## CONTACT

**Nancy Massicotte** Investor Relations  
 Email: [info@grizzlydiscoveries.com](mailto:info@grizzlydiscoveries.com)  
 Tel: 1-866-503-3377

[www.grizzlydiscoveries.com](http://www.grizzlydiscoveries.com)